

Saint Paul Parks and Recreation

2008 ANNUAL REPORT



**Helping to Make Saint Paul
The Most Livable City in America**

MESSAGE FROM THE MAYOR

Saint Paul is fortunate to have many natural amenities, but rankings show that it is our commitment to preserving green space and creating new recreational opportunities for all of our residents that makes the City a national leader. In the last year, we opened the City's first indoor water park, reconnected residents to the Mississippi River at a beautifully redesigned Raspberry Island and newly created Chestnut Plaza at Upper Landing Park, and extended the skating season with our refrigerated ice rinks.



From our nationally recognized golf courses to placid lakes, a zoo and conservatory, a baseball stadium, and an amphitheater, Saint Paul Parks and Recreation serves the needs of many interests, including the afterschool educational needs of our children. It is my honor to present our 2008 Annual Report for the Department of Parks and Recreation. This summary of activities, programs, services and facilities reinforces that Saint Paul Parks and Recreation is among the best in the entire country.

Sincerely,



Christopher B. Coleman
Mayor

MESSAGE FROM THE DIRECTOR

This report highlights the many achievements of the City of Saint Paul Parks and Recreation Department in 2008. Saint Paul Parks and Recreation accomplished a great deal in the past year, including receiving national re-accreditation from the National Recreation and Parks Association and the successful completion of projects such as the Oxford Community Center, Raspberry Island, Upper Landing Park, Bruce Vento Nature Sanctuary land acquisition and Saint Paul's first splash pad at Lewis Park. Saint Paul Parks and Recreation also launched innovative programming and education initiatives including the Blooming Butterflies exhibit at Como Park Zoo and Conservatory, implementation of a \$25 annual fitness membership and a wide variety of expanded and re-energized health and wellness efforts.



Due to the current economic environment we continue to face many challenges, however we are committed to moving forward and will work to maintain and enhance the quality Parks and Recreation services that residents of Saint Paul deserve. We have finalized our new Vision Plan which will guide our future decision-making process and provide a mechanism and guide to implementing the newly adopted Comprehensive Plan. These two plans provide a sturdy foundation for the future of Parks and Recreation in Saint Paul.

Over the next year, Saint Paul residents will see the completion of the second phase of construction at Harriet Island, the launch of a new fee-assistance plan for youth programming, improved technology services including a revamped Golf Saint Paul website and increased sustainable environmental initiatives throughout the entire Saint Paul Parks system.

We will continue to work to serve the residents of Saint Paul, and will strive to help make Saint Paul the Most Livable City in America.

Sincerely,



Mike Hahm, CPRP
Director



CITY OF SAINT PAUL ADMINISTRATION

Mayor Christopher B. Coleman
Deputy Mayor Ann Mulholland

CITY OF SAINT PAUL CITY COUNCIL

WARD 1 COUNCILMEMBER Melvin Carter III
WARD 2 COUNCILMEMBER Dave Thune
WARD 3 COUNCILMEMBER Pat Harris
WARD 4 COUNCILMEMBER Russ Stark
WARD 5 COUNCILMEMBER Lee Helgen
WARD 6 COUNCILMEMBER Dan Bostrom
WARD 7 COUNCIL PRESIDENT Kathy Lantry

2008 Annual Report

TABLE OF CONTENTS

Mission / Vision	2
Award Winners	3
Budget Summaries	4-5
Organization Chart.	6
Parks & Recreation Commission	7
Como Park Zoo & Conservatory.	8-10
Administration – Finance & Planning	10
Special Services	11-12
<i>Aquatics.</i>	<i>11</i>
<i>Wells Fargo WinterSkate</i>	<i>11</i>
<i>Ski Program.</i>	<i>11</i>
<i>Golf</i>	<i>11</i>
<i>Security</i>	<i>11</i>
<i>Special Events.</i>	<i>12</i>
<i>Midway Stadium</i>	<i>12</i>
Design & Construction	13
Operations	14-15
Recreation Services.	16-19
<i>Recreation Centers.</i>	<i>16</i>
<i>Circulator Buses.</i>	<i>16</i>
<i>East Side Learning Collaborative.</i> ..	<i>16</i>
<i>Saint Paul Getting Fit</i>	<i>17</i>
<i>Refrigerated Rinks.</i>	<i>17</i>
<i>Senior Programs.</i>	<i>17</i>
<i>Adaptive Recreation</i>	<i>17</i>
<i>Municipal Athletics</i>	<i>18-19</i>
Events	20

Saint Paul Parks and Recreation

“Our Promise To You”

The staff of Saint Paul Parks and Recreation promises to cheerfully and respectfully serve you. We will provide access to quality programs and clean and safe facilities with timely and effective service. We will listen to your suggestions and concerns and respond to the best of our abilities.

Mission:

To help make Saint Paul The Most Livable City in America, Saint Paul Parks and Recreation will, facilitate the creation of active lifestyles, vibrant places and a vital environment.

Vision Statement

Saint Paul Parks and Recreation will make Saint Paul The Most Livable City in America by:

- Responding creatively to change
- Innovating with every decision, and
- Connecting the entire city.

Statement of Benefits of Saint Paul Parks and Recreation:

- Fosters human development and supporting education
- Strengthens community image and a sense of place
- Promotes economic development in Saint Paul
- Protects, sustains and revitalizes environmental resources
- Increases cultural unity and building community relationships
- Strengthens safety and security
- Provides the essential support service for park and recreational experiences

Core Functions Statement

1. Development and Operation of the Como Campus.
 - a. Provide for major community wide natural resource education and appreciation experiences
 - b. Present unique recreation opportunities for all segments of the community
2. Development of Unique Recreational Opportunities and Protection of Natural Resources in the National Great River Park (Mississippi River Corridor)
 - a. Coordinate the numerous plans that have been developed by a multitude of agencies / community organizations
 - b. Carefully plan and add special recreational experiences.
3. Implementation and Maintenance of Quality Parks, Recreation and Open Spaces
 - a. Allow for structured, unstructured, active and passive recreation opportunities.
 - b. Ensure safety and usability of community investments
4. Development, Operation and Facilitation of Recreation, Arts and Special Events Programming and Facilities that Meet the Needs of the Community within the Established Resources.
 - a. Operate a system that is responsive to resident needs, incorporates national trends and is flexible in the use of maximizing available resources.
 - b. Provide facilities that serve the needs of the entire community.
5. Development and Support of Specialized Facilities and Programs that are Substantially Self-Supporting
 - a. Allow for city wide participation and non-resident fee support
 - b. Provide for more stable revenue source
 - c. Encourage popular special events
6. Protection and Enhancement of Natural Resources
 - a. Master Plan Management of Resource Areas
 - b. Restoration of Degraded Areas
7. Encourage Resident Participation
 - a. Involve residents in design and delivery of programs and facilities
 - b. Encourage community collaboration and involvement.
8. Develop and promote education opportunities, job preparedness and leadership development for the youth in Saint Paul
 - a. Second Shift Initiative
 - b. Como Campus education programs, Community Education, and Youth Job Corps



Award Winners

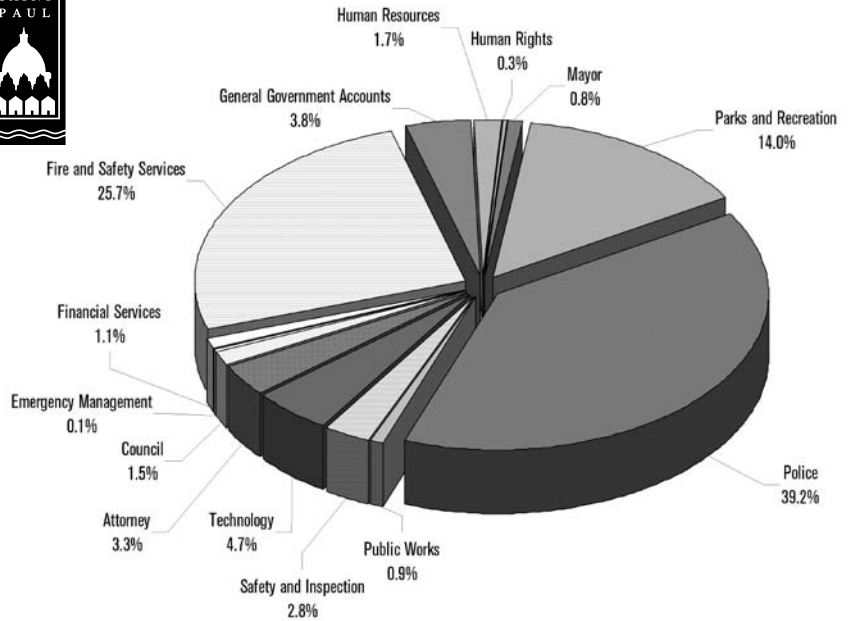


- Saint Paul Parks & Recreation was awarded the NRPA/USA Football Youth Grant in partnership with the National Recreation & Park Association (NRPA) and USA Football.
- Raspberry Island Regional Park and Two Rivers Overlook Park received awards in the Public Landscape Design Category. The “City of Saint Paul Parks & Recreation Vision Plan” was also recognized in the Planning and Research Category.
- Women’s Press named the Marjorie McNeely Conservatory as Best Place to hold a Wedding Reception in the annual ‘What Women Want’ Reader Poll.
- The Marjorie McNeely Conservatory was recognized as the “Best Place to Wander Indoors” by City Pages magazine.
- With the completion of the Raspberry Island, Upper Landing and a significant step toward completion of the Bruce Vento Nature Sanctuary, the Mayor issued a proclamation that Oct. 8, 2008 is to be *National Great River Park Day*.
- Retired Special Services Manager Vince Gillespie was awarded the Karl Neid Award for exemplifying a record of outstanding public service, and making significant contributions to improving the quality of life in Saint Paul.
- Indian Mounds Regional Park: Secured over \$40,000 in grants from the DNR and Ramsey-Washington Metro Watershed District to conduct invasive removal and restore over 15 acres of disturbed bluff land back to native oak savanna and oak woodland.
- Environmental Services won the 2008 Sustainable Saint Paul Award for Water Quality and Conservation.
- Environmental Services won the 2008 Landscape Ecology Awards Program given by the Ramsey-Washington Metro Watershed District for their participation in the Phalen Regional Park Shoreland Restoration Project, a project fueled by partnerships since 2001.
- Retired Parks & Recreation director Bob Bierscheid was awarded the 2008 National Recreation and Parks Association’s Outstanding Professional Award for the Great Lakes Region.
- The Parks and Recreation Department received national re-accreditation from the Commission for Accreditation of Parks and Recreation Agencies (CAPRA). Accreditation was first awarded in 2003, and Saint Paul Parks & Recreation is 1 of only 3 accredited agencies in Minnesota.

Budget Summaries

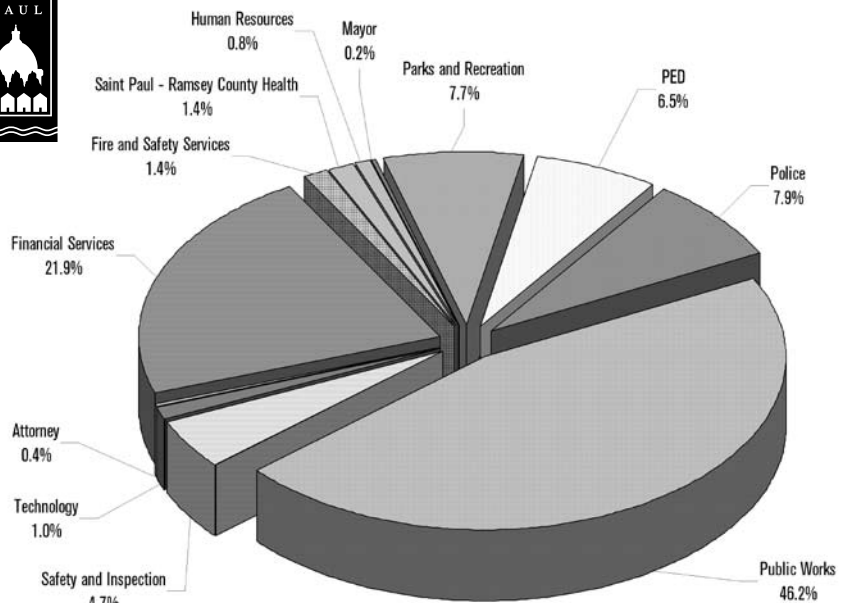
City of Saint Paul 2008 Adopted General Fund Budget - \$182,430,768

Attorney	\$6,015,776
Council	\$2,798,414
Emergency Management	\$182,181
Financial Services	\$2,002,716
Fire and Safety Services	\$46,818,914
General Government Accounts	\$7,002,410
Human Resources	\$3,161,786
Human Rights	\$574,414
Mayor's Office	\$1,481,120
Parks and Recreation	\$25,519,501
Police	\$71,425,110
Public Works	\$1,677,291
Safety and Inspection	\$5,136,146
Technology	\$8,634,989



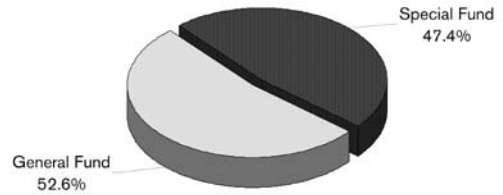
City of Saint Paul 2008 Adopted Special Fund Budget - \$298,012,231

Attorney	\$1,104,652
Financial Services	\$65,105,265
Fire and Safety Services	\$4,054,909
Saint Paul - Ramsey County Health	\$4,236,131
Human Resources	\$2,348,000
Mayor	\$536,455
Parks and Recreation	\$22,967,998
PED	\$19,314,585
Police	\$23,556,515
Public Works	\$137,544,762
Safety and Inspection	\$14,140,361
Technology	\$2,970,866



2008 Adopted Budget - \$48,487,499

General Fund Adopted: \$25,519,501
Special Fund Adopted: \$22,967,998



Administration \$5,948,371
Admin, Parks Commission, Parks Security, Utilities, Wellstone Shared Costs

Como Campus \$1,998,389
Conservatory, Zoo, Campus

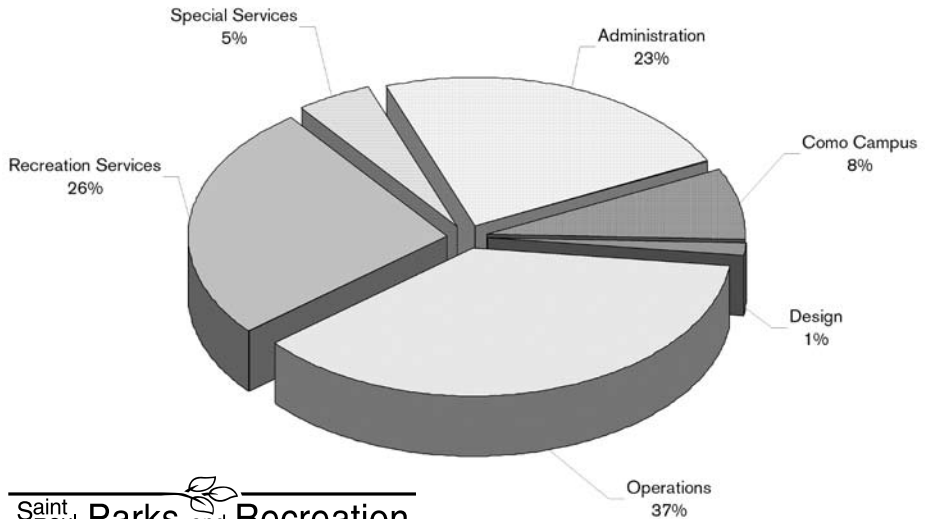
Design \$327,763
Design Center, GIS Support

Operations \$9,415,484
Building Trades, HI/Dtwn Pks, Winter Activities, Zoo HVAC/Pools, Ground Maintenance, Permits Mgmt, Specialized Equip, Maintenance Support, Rec. Center Maintenance, Arts & Gardening Support, Forestry Mgmt & Support, Parks Tree Maintenance, Tree Planting & Inventory

Recreation Services \$6,638,920
Rice/Arlington Dome, Community Ed Partnership, Admin, West Service Area, Central Service Area, North Service Area, East Service Area, Citywide Service Area, Senior Program, Adaptive Recreation, Municipal Athletics, Rec. Check

Special Services \$1,190,574
Parks Safety, Ski Program, Seasonal Swimming, Oxford Pool, Midway Stadium

2008 General Fund – \$25,591,501



Administration \$2,898,488
Landmark Plaza, Private Donations, Schultz Sculpture Maintenance, Amenity Donation, Max Metzger, Youth Job Corp Grant, Twins Grant, Arts & Gardening Grant, Regional Park Maintenance Grant, Night Moves, Environmental Stewardship Grant

Como Campus \$5,378,786
Japanese Garden, Como Campus Conservation, Como Campus Guest Services, Como Campus, Como Conservatory Support, Como Zoo Support, Zoo Animal Fund, Education Programming, MN Lottery

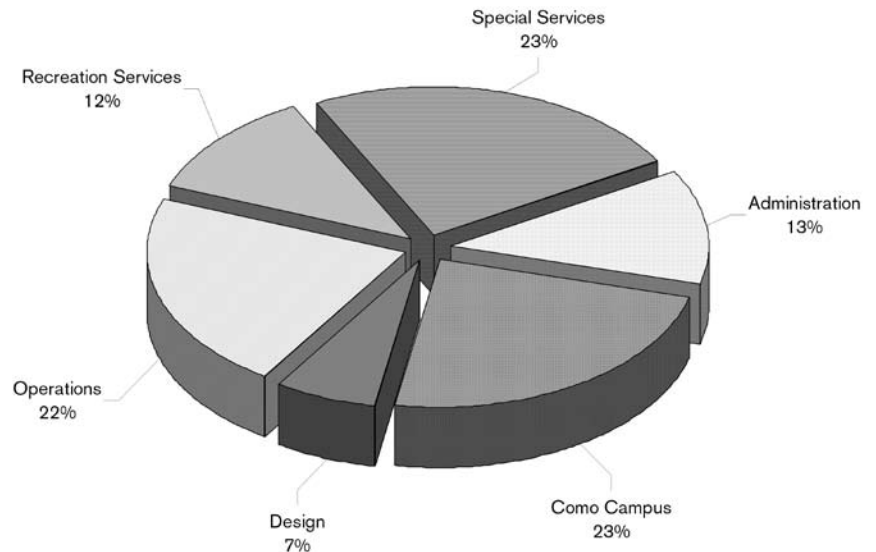
Design \$1,507,680
Special Projects

Operations \$4,944,964
Forestry Support, Service Facility, PED Property Maintenance, Summary Abatement Maintenance, Contracted Services, Refuse Handling Equip, Showmobile Support, Street Tree Maintenance, Tree Trimming

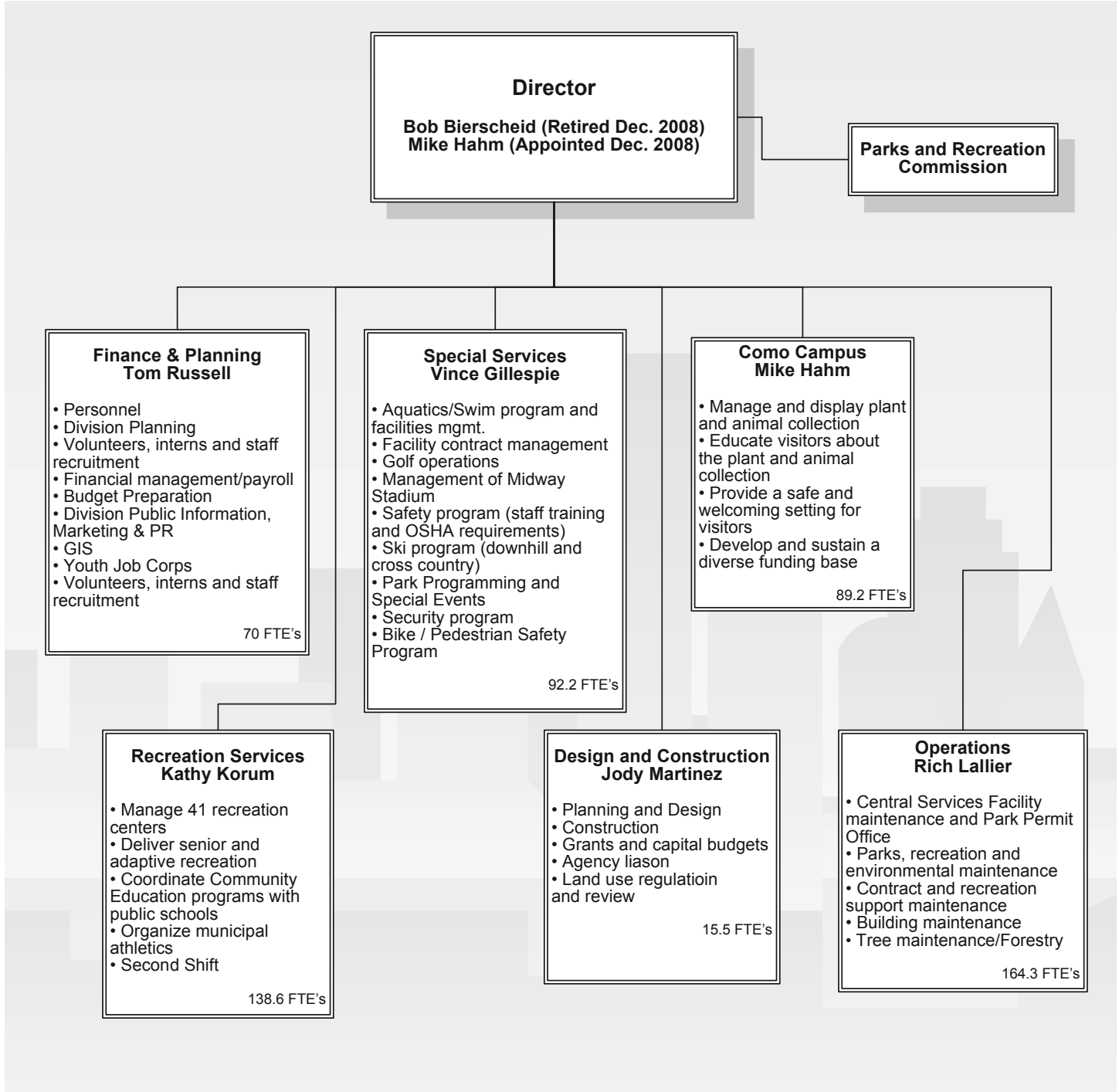
Recreation Services \$2,659,757
West Service Area, Central Service Area, North Service Area, East Service Area, Citywide Service Area, Harding Area Football, Adaptive Recreation, Senior Activities, Municipal Athletics, Baseball Athletic Association, Football Athletic Association, Softball Athletic Association, Basketball Athletic Association, Hockey Athletic Association, R & A Batting Cages, Star of the North Games, Youth Program

Special Services \$5,578,023
Highland National Debt Service, Special Services Admin, Como Golf, Highland National Golf, Highland 9 Golf, Phalen Golf, Golf Admin, Special Services Concession, Citywide Special Events, Watergate Marina, Midway Stadium

2008 Special Fund – \$22,967,998



Organization Chart



Total: 569.8 Full Time Equivalents



Parks & Recreation Commission

Purpose

The purpose of the Saint Paul Parks and Recreation Commission is to advise City officials on matters of city-wide and long-range importance to the parks and recreation system.

Members

- Carrie Wasley, Chair
- Jonathan Carter
- Erick Goodlow
- Thomas Kayser
- Therese Kelly
- Paul Middleton
- Wendy Moylan
- Betsy Mowry
- Peter Pha



Goals

The Commission adopted five equally-prioritized goals for 2008.

- **Goal One:** Engage members, public and staff in significant planning issues (i.e. Comprehensive Plan, Ford Site, Community Health and Wellness Recreation Programming Plan, Strategic Plan, Offsite Shuttles and Circulators, CIB Plan, Invest Saint Paul, Pathway Committee and the Dog Park Task Force).
- **Goal Two:** Support, provide oversight and evaluate Operation Section Issues and Needs.
- **Goal Three:** Provide leadership, insight, evaluation and guidance for Division in CAPRA Re-accreditation process.
- **Goal Four:** Support asset management and facility sustainability issues in the parks and recreation system
- **Goal Five:** Promote and preview significant parks and recreation initiatives including hosting the 2008 RNC, administering the 2008 Star of the North Games, Como Aquatics Center planning, Recreation Services Reorganization, Youth Job Corps

Resolutions

In pursuit of its goals, the Commission passed 24 resolutions which it forwarded to the Mayor and City Council. Included are:

- 08-02: authorizes Saint Paul Parks and Recreation to enter into an agreement with Twin Cities Toyota Dealer Group for three years (Toyota will provide cash support of \$100,000 for each year and 10 leased vehicles at no fee).
- 08-04: endorses the 1008-2012 Saint Paul Parks and Recreation Strategic Plan.
- 08-13: endorses the Saint Paul Parks and Recreation Vision Plan.
- 08-18: recommends that the public process begin, including community meetings to discuss the establishment of off leash areas at Bluff Park and Island Station.
- 08-19 affirms, endorses and encourages citizen passage of the 2008 Clean Water, Land and Legacy Amendment on the Nov. 4, 2008 state ballot.

Membership

The Commission consists of nine at-large Saint Paul residents appointed by the Mayor and approved by City Council. Members serve staggered three-year terms.

Meetings

The Commission holds meetings on the second Wednesday of every month at Saint Paul Parks and Recreation facilities.

Como Park Zoo & Conservatory



Polar Bear Odyssey

Como Zoo is embarking on its very own arctic adventure as it prepares for Polar Bear Odyssey – a new polar bear habitat opening in 2010. Construction began in 2008 and at the halfway point is on schedule and budget.

Polar Bear Odyssey will place bears in a natural immersive environment that offers dramatically more land space and a multitude of opportunities for the bears to exhibit natural behaviors such as digging, swimming, foraging and hunting. Visitors will delight in up-close and personal views of the world's largest land predator. This year-round habitat will offer a climate controlled "Outpost" to experience the bears' four seasons and wonderful open air views that will bring the polar bears as close as twenty feet.

Polar Bear Odyssey will emulate a Hudson Bay ecosystem complete with a river-washed stream, rocky cliffs and evergreen plantings. Specific elements of the new habitat include:

- A 13,140 square foot outdoor habitat that is four times larger than the current polar bear space.
- Three pools of various depths to provide the bears with options that mirror their native Tundra habitat. One pool will contain live fish for the bears to hunt.
- A 260 square foot digging pit filled with bark chips, gravel and sand.
- A 1,270 square foot "Outpost" building to provide visitors with year-round, climate-controlled experiences of the polar bears. From the Outpost, visitors will be able to observe bears swimming, hunting and playing through large floor to ceiling glass windows.
- A 650 square foot Lodge to provide a great get-away for business meetings, education classes and private receptions. The Lodge will have floor-to-ceiling windows looking out into Polar Bear Odyssey. Attached to the Lodge will be new restroom facilities.

- Two separate habitat areas that can either be separated or joined by a corridor. This structure allows Como Zoo to separate the two habitats when housing a family group as the male bear must be isolated from the female and cubs.
- All land space in the habitat will be covered with soil and gravel so the bears have a soft, natural surface to walk on.
- Two designated stations for the public to watch operant animal training sessions between zookeepers and polar bears. During training sessions, zookeepers teach bears specific behaviors that help the staff to monitor their health and safety. For example, bears are taught to present their paws for inspection or to open their mouths to check on dental health.
- A 3,260 square foot state-of-the-art holding building to provide large indoor bedrooms, daylight, pools and cub den.

Polar Bear Odyssey meets or exceeds the most recent versions of the USDA Marine Mammals Act, Association of Zoos and Aquariums Polar Bear Standards and the Canadian Polar Bear Protection Act. These three standards provide detailed requirements for all elements of the care and management of polar bears, including square feet of habitat space per bear, height of habitat barriers, opportunities for bears to display natural behaviors, type of water, filtration systems, size of holding space, etc. Como Zoo elected to pursue the most stringent standards available for polar bear care to insure a high quality of life for the bears, to increase the probability of receiving a wild bear from Canada, and to guarantee the habitat could house a family group with cubs.

Visitors can follow the progress and get updates on the project with a webcam, time lapse and update videos at www.comozooconservatory.org/como_zoo/PBO.shtml



Blooming Butterflies

Blooming Butterflies opened to the public on June 6 at Como Park Zoo and Conservatory. The exhibit, funded by the Como Friends with a great deal of installation support from Parks trades staff and Como staff, was an overwhelming success with over 400,000 guests visiting.

Visitors experienced a spectacular butterfly garden where they are immersed in a lush butterfly habitat surrounded by hundreds of butterflies moving freely throughout Blooming Butterflies. Over 100 species from around the world will be exhibited throughout the summer, with each visit creating a different experience. At any given time up to 500 butterflies can be found in the habitat delighting guests through intimate interaction. These beautiful, colorful creatures are curious, approachable and often rest on visitors as they stroll through the garden. Guests go home with a greater understanding of these fragile, beautiful insects, and a deeper appreciation for the importance of maintaining their habitat to ensure their survival.

Blooming Butterflies will be returning in the summer of 2009.



Voluntary Donations

Como Park Zoo and Conservatory had a record year in voluntary donations in 2008 by collecting \$1,128,700, an increase of 5.59% over 2007.

Approximately 20% of Como's operating budget, over \$1,100,000 is derived by the voluntary donation program. This was the third consecutive year of increases since the start of collecting voluntary donations in lieu of admission fees. Six of the 12 months had reported record collection. Como welcomes over 1.9 million visitors each year, making it one of the top-visited attractions in Minnesota. Como also offers guests an experience to get close to nature by viewing animals and plants in natural habitats at the Zoo and Marjorie McNeely Conservatory free of charge.

"Many AZA members are reporting a record 2008," states Steve Feldman, Senior Vice President, Communications for the Association of Zoos & Aquariums (AZA). "When gas prices were high over last summer, America's accredited zoos and aquariums became the stay-cation destinations of choice for many families. As environmental issues become even more important in our daily lives, people are turning to their zoos and aquariums as a place to connect with conservation. Even in a challenging economy, zoos and aquariums are expected to remain popular destinations for American families."

Como Circulator

Preparations were made for a 2009 launch for a parking alternative and free shuttle to Como Park Zoo and Conservatory's Visitor Center. Three shuttle buses were purchased and will begin operating weekends in summer 2009.



**COMO PARK
ZOO & CONSERVATORY**



Children's Gallery

The new *Leonard Wilkening Children's Gallery* opened in April and is the epicenter for childrens' experiential learning. Children are able to learn about the functions of nature in everyday life through hands-on activities, creative play and interactive stations.

Children are able to explore five educational, fun and interactive play zones in the Children's Gallery. Kids get their hands wet with a water play station that illustrates evaporation, play the food chain game with colorfully illustrated blocks or roll up their sleeves and work as a gardener or zookeeper while identifying natural habitats. The *Leonard Wilkening Children's Gallery* was funded by the generous support of Como Friends.



como friends
TOGETHER WE GROW



Corpse Flower

Something smelly was going on at the Marjorie McNeely Conservatory in April. The *Amorphophallus titanum*, also known as the Corpse Flower from the smell it omits during bloom, began to bloom on April 8 and received quite a bit of attention from visitors and media, including record web hits to the "Corpse Cam" and time lapse video. Through 2007, only 122 plants have known to bloom worldwide.

Administration - Finance & Planning

- The Saint Paul Parks Conservancy was officially organized and is a new non-profit organization whose mission is to enhance and expand parks and recreational opportunities in Saint Paul
- More than \$600,000 in free publicity was generated through strategic communication efforts to the media
- Section audits were increased and detailed plans were updated for future use
- Enhancing work that began in 2007 on the website, more than 75 resident survey responses led to additional website reorganization and the creation of a "one stop shop" for customer service related inquiries
- More than 2,000 customer service related inquiries and issues were resolved in 2008
- Utilizing the automated registration technology, comprehensive analysis and recommendations were made to enhance service delivery throughout the department





Special Services



AQUATICS

Aquatics are responsible for the Highland Park Aquatic Center, Como Pool, Phalen Beach, and Great River Water Park.

- The New Great River Water Park opened in 2008 with excellent attendance
- Swim Lessons attracted 1,930 children. With more than 70 percent of participants using online registration
- General admission attendance continues to increase at all outdoor pools
- Over 40 participants enrolled in the sailing program at Lake Phalen
- Como Pool was able to survive the 2008 season, but will close for replacement in 2009

WELLS FARGO WINTER SKATE

More than 16,000 guests enjoyed free skating at the Wells Fargo WinterSkate Rink located across from Rice Park in downtown Saint Paul during the winter season.

SKI PROGRAM

Parks and Recreation offers cross country and downhill ski and snowboarding opportunities on Majestic Mount Como in Como Park. Ski trails are located in Como, Highland and Phalen Parks.

- 100 students participated in cross-country ski lessons
- 615 students participated in downhill ski lessons
- 182 students participated in snowboard lessons

GOLF

Municipal golf courses owned and operated by Saint Paul Parks and Recreation include Highland National and 9, Como and Phalen.

- 125,093 Golf Rounds were played in 2008
- Focused on adding more golfers in the 21-29 age range, who in 2008 played 2,555 rounds
- Implemented the Friday late afternoon "Sweet Spot" program at the Highland 9 Hole course which hosted more than 300 new age golfers each week

SECURITY

- In 2008, Park Security received 3,214 calls for service, 654 more calls than in 2007.
- 710 calls for service that resulted in a citation being issued.
- Park Security was called upon to assist with numerous special events in 2008. The events totaled more than 3,000 staff hours.



SPECIAL EVENTS

The Saint Paul Winter Carnival celebrated its 123rd year with parades, ice sculptures and wintertime fun.

There were over 65 large citywide special events that took place throughout the Parks system. The summer of 2008 saw an emphasis on healthy events including races, walks, runs and the inline marathon. The City welcomed the Great River Energy Bicycle Festival which featured world class high speed bike racers from across the Country racing in a Criterium Race in Lowertown and a Time Trial on the Ohio St. Hill.

Saint Paul welcomed back the Downtown Beat Classic Car Show every other Saturday night on Kellogg Boulevard during the summer attracting thousands of guests downtown.

Neighborhood cultural festivals saw record breaking attendance which included events like the Flint Hills Children's Festival, Dragon Boat Festival and Rondo Days.

Concerts and music filled the air in Mears Park with free events like the Saint Paul Chamber Orchestra Concrete and Grass Festival, the Hot Summer Jazz Festival and Saint Paul After Hours which was held every Thursday night in the summer.

During the Republican National Convention more than 60 permits were issued in the parks.



Star of the North State Games

Hosted the 2008 Star of the North Games, Minnesota's own Olympic-style multi-sport event. More than 7,000 athletes coaches, referees, family members and spectators participated in the 2 weekend event.

Phalen Holiday Lights

Over 10,890 vehicles and an estimated 40,000 visitors enjoyed a spectacular array of holiday lights and animated displays as they took an evening drive through Phalen Park in Saint Paul. The delightful tour spanned more than a half a mile along Lake Phalen and Phalen Golf course. The event generated more than \$50,000 in donations to area charities, including a \$10,000 donation to the new Saint Paul Parks Conservancy.



MIDWAY STADIUM

The mission of Midway Stadium is to operate a public multi-purpose outdoor recreational facility in a coordinated, professional manner which is a credit to the City of Saint Paul and the Department of Parks and Recreation and fulfills a wide range of needs for tenants, athletes, coaches, managers, and guests.

- The Stadium's main tenant, the Saint Paul Saints, completed its 16th season and its 3rd year as a member of the American Association of Independent Baseball. The Saints hosted 53 games and attracted more than 300,000 spectators. The team also hosted the American Association All Star game, which attracted a capacity crowd of more than 6,000 spectators. Team owner and movie star Bill Murray attended the event, along with owners and executives from each of the league's 10 teams.
- There were 167 events at the Stadium in 2008, and the facility was in use 65 percent of available dates from April 8 until October 26.
- In addition to 129 baseball games, other events included 25 football games, five autocross parking lot events, and charity walks on behalf of the Prevent Child Abuse Minnesota and the National Kidney Foundation. The Stadium's premier non-Saints baseball event was the State Class AAA High School Baseball Tournament June 12-13, which attracted more than 5,500 spectators.



Design & Construction

The Design and Construction Section provides planning, design, and construction services for the development and preservation of the City's Open Space System including parks, trails, recreational/sports facilities, parkways, gardens, squares, plazas, wetlands, and environmental preserves.

Raspberry Island

This major renovation of Raspberry Island included replacement of a rip-rap armament to protect the riverbank, landscaping that included a walking path, access to the river, planting beds, benches, lighting, parking lot improvements and construction of public restroom facilities in the Saint Paul Boat Club building. The total cost for the renovation was \$4.5 million.

Chestnut Plaza - Upper Landing

These two projects were the final phases of reclaiming the downtown river edge from former road right of way. Combined with Upper Landing Park, these two new public spaces provide important visual and physical contact with the Mississippi River. The close proximity to the river within the heart of downtown, allows Saint Paul to make a claim as the best urban place to experience a working river. The plaza features a display fountain evocative of the historic landing that, at one time, was the transportation hub of the city. Together, the park, plaza and landing can now combine to form a significant public setting bridging the divide between the urban and natural. Funding for these projects came from a Federal transportation enhancement grant, Metro Council Livable Communities Demonstration Grant, and CIB. The Landing and Plaza were both built for approximately \$ 2.1 million.

Lewis Park

A very worn and tired play area at Lewis Park was recently replaced. The new play area is composed of a central play space with pockets surrounding it. The equipment in the central play area, called Evos, is an entirely new and innovative play system by Landscape Structures, one of the countries top equipment manufacturers. It provides challenges for those ages 5-12. Yet it provides something new and exciting for those slightly older than 12, an age group that is often overlooked by play equipment manufacturers. The equipment in the play area surrounding the central play area is specifically for those aged 2-5. The equipment includes a net climber, Mobius strip climbing wall, and swings. The entire play area is covered with artificial turf which allows accessibility to all of the equipment while meeting fall height safety requirements. A highlight of the park improvements is the addition of the City of Saint Paul's first Splash pad. The splash pad system sprays water from the ground along with wiggly and stationary tubes, drains and then re-circulates. This



system allows kids of all ages and abilities to get wet and have fun on those hot summer days when they can't get to a lake or pool. Nearly \$370,000 was invested in this neighborhood park.

Harriet Island

Harriet Island Renovation Phase II, underway in 2008 and scheduled for completion in late Spring 2009, include shoreline restoration, a new picnic shelter, picnic grounds, trail connection, plazas, the extension of the Phase I formal promenade as well as more informal paths and walkways. The largest feature is a bioswale which will highlight the process of storm water as it flows through native plantings and rock outcroppings and winds its course to the Mississippi River. This phase of Harriet Island will provide a contemplative and relaxed setting. The project's construction cost is \$1.8 million.

Bruce Vento (Land)

Several important properties necessary for the further development of the nature sanctuary and interpretive center were acquired.

Oxford Community Center

A grand opening was held to celebrate the completion of the Jimmy Lee Recreation Center and the Great River Water Park. This project required sustained effort over multiple years starting from the acquisition of the land, development of a community consensus and design of the facilities through to completion of the construction of this community resource.

Operations

Environmental Services

Environmental Services manages the Department's sensitive natural resources through a variety of programs, partnerships and projects.

- Logged approximately 11,000 volunteer hours valued at \$210,000 or equivalent to 5.25 full-time employees.
- Winners of the 2008 Sustainable Saint Paul Award for Excellence in Water Quality and Conservation.
- Winners of the 2008 LEAP-Landscape Ecology Awards Program, awarded by the Ramsey-Washington Metro
- Watershed District for the Phalen Regional Park Shoreland Restoration Project.
- Received \$40,000 in grants to restore 15 acres of disturbed bluffland back to native oak savanna and oak woodland in Indian Mounds Regional Park.

Building Trades

Provides plumbing, electrical, carpentry, painting, and heating/cooling needs for the Department and city-wide events.

- Worked with Police Department and Neighborhood Housing Property Improvement to address over 2,600 complaints.
- Provided plumbing, electrical, carpentry, and masonry support to complete the Butterfly Exhibit at Como Park Zoo and Conservatory.
- Transformed Desnoyer Recreation Center into Kid's Park Day Care Center which included substantial modifications to meet daycare codes.
- Rebuilt the Civilian Conservation Corps monument in Phalen Park to commemorate the 75th anniversary.



Park Maintenance

Park Maintenance performs routine grounds and facility maintenance of regional, city, neighborhood parks, parkways, and open space. Additionally, this unit plays a primary role in preparation, management, and disassembly for programs and events that occur within these park spaces.

- Maintained over 4,000 acres of parkland and 100 miles of paved off-road trails, 38 tot lots, 15 picnic/rental facilities, dozens of athletic courts, and 3 maintenance shops.
- Provided service to large regional events such as; the Saint Paul Winter Carnival, Flint Hills Children's Festival, Taste of Minnesota, Hmong International Freedom Celebration, Dragon Fest, and Irish Fest.
- Hosted the 24th annual Spring Parks Cleanup event.
- Purchased and integrated the "Green Machine," an environmentally friendly trail sweeper.
- Significantly improved turf on Lexington Parkway medians through aeration, fertilization, seeding, and weed control.

Contract Services

Contract Services provides maintenance services for property owned by the Department of Planning and Economic Development (P.E.D.) and the Saint Paul Port Authority, and cleans properties for the Department Of Safety and Inspections (D.S.I.) and provides contractually arranged services to the Sewer Utility.

- Provided property oversight (tree trimming, grass cutting, snow removal) for 190 P.E.D. properties.
- Responded to 7,413 Department of Safety work orders and provided trash hauling for 368 properties.
- Provided maintenance for the Sewer Utilities holding ponds, lift stations and levee sites.

Parks Permit Office

The Parks Permit Office issues reservations for picnic shelters, pavilions, open space (walks, runs, photo and video shoots, fossil hunting, and ice climbing), and the Showmobile. The permit office is also responsible for providing administrative support to Forestry, Recreation Maintenance, Contract Services, and Building Trades.

- Arranged for 52 Showmobile reservations and issued over 1,900 park permits.
- Created a database to track and monitor existing and future donations to the Amenity Donation Program.



Como Central Service Facility Storeroom

Como Central Service Facility Storeroom provides custodial and automotive supplies and equipment for the Department.

- Utilized the M4 Fleet Management Inventory program to evaluate value, turnover and under-utilized stock to determine efficiencies.

Equipment Services

Equipment Services provides acquisition, management, and maintenance of small and specialized equipment/apparatus, as well as facility management for the Como Central Service Facility.

- Maintained 625 units of specialized equipment and 1,118 units of small equipment.
- Administered and coordinated 172 pieces of rolling stock vehicles.

Forestry and Tree Management

Forestry and Tree Management maintains Saint Paul's 130,000 public trees and 200,000 parkland trees by using and implementing modern practices and techniques.

- Removed 2,495 diseased or dead public and private trees, 1,050 private trees, 2533 stumps and planted 2,400 boulevard trees.
- Established a Tree Advisory Panel for Parks and Recreation.
- Reestablished the Arbor Day program with Saint Paul Schools.

Arts and Gardening

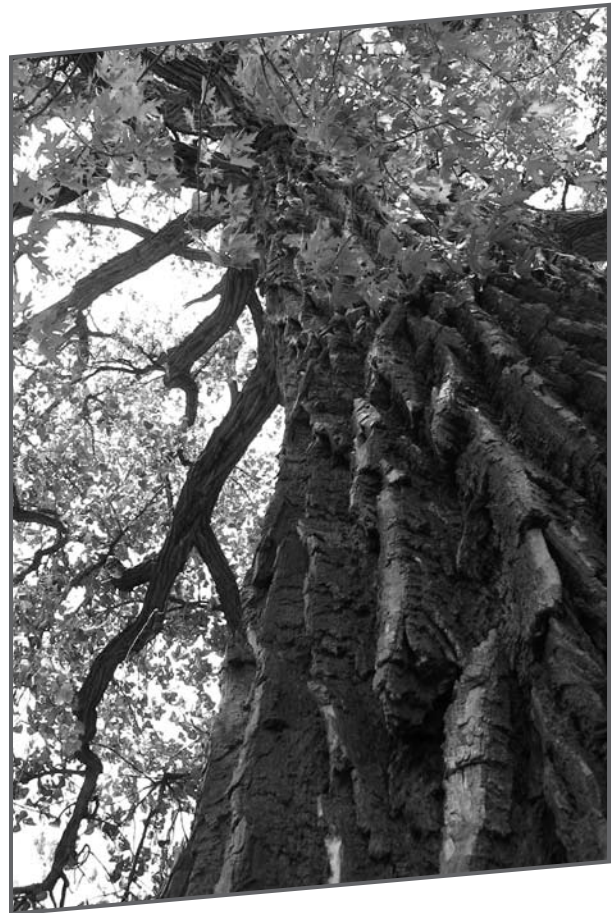
Arts and Gardening manages the Department's public gardens and public art collection through a variety of programs, partnerships, and projects.

- Maintained over 130,000 square feet of garden beds, 150 planters, and 600 hanging baskets.
- Increased community support of Blooming Saint Paul program by \$32,000.
- Organized the fourth annual Golden Bloom Awards program for recognizing and celebrating beautiful gardens in Saint Paul with a 100% increase in participation.
- Created spring sculpture maintenance report for public sculpture collection.
- Established the first public art maintenance program to restore and maintain collection.

Recreation Maintenance

Recreation Maintenance provides recreation centers with the daily custodial/grounds maintenance needed to operate in a clean and safe environment.

- Provided maintenance and weekly inspections at 39 play areas.
- Provided logistical and staff support for programming events including: Star of the North, Highland Fest,
- Oxford Community Center Grand Opening, and Rondo Days.
- Maintained more than 368,000 square feet of interior building space, 248 acres of grounds, 140 ball fields, 65 soccer/football fields, and 28 ice rinks.
- Assisted Design and Building Trades in completion of flooring surfaces at Oxford Community Center.



Recreation Services



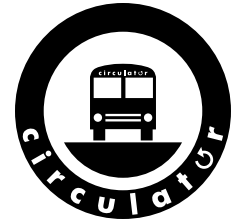
RECREATION CENTERS

33 recreation centers and a partnership with Mt. Airy Boys and Girls Club provide the public with places to participate in sports, recreation and leisure activities. Innovative facility partnerships were implemented in 2008 for 8 recreation centers to focus programming efforts on quality over quantity.

- The recreation centers attracted more than 2.5 million visitors for both drop-in and programmed activities.
- A total of 4,833 classes/activities were offered at the recreation centers. More than 28,000 people participated in these activities.
- During the 2007-2008 school year, more than 400 children participated in the Rec Check program which was offered at 24 recreation center sites. The Rec Check program is a free, after school program where youth, in grades 1-6, can engage in homework help, reading, crafts, games, and physical activities.

CIRCULATOR BUSES

The East Side Circulator buses provide free, safe, and accessible transportation to facilitate youth participation in learning opportunities in the Dayton's Bluff and Payne Phalen neighborhoods.



- Provided 4,248 rides on the East Side Circulator buses for youth during the 10 weeks of summer service.
- Piloted after school Circulator service (Tuesdays and Thursdays from 3 to 6 p.m.) beginning in the fall of 2008.
- Offered community-based employment and leadership opportunities for 18-21 year-old Youth Job Corps workers who staffed the buses to ensure safety and to help youth connect with learning sites along the routes.



EAST SIDE LEARNING COLLABORATIVE

- Parks convened and facilitated the East Side Learning Collaborative, a group of over 20 East Side organizations and community members who work together to create a community where youth learn, grow, and lead.
- Through a MN Department of Education After School Community Learning grant, offered after school and summer programs in the Dayton's Bluff and Payne Phalen neighborhoods. 766 youth participated in at least one session of grant-funded programs, which were run by Parks as well as a number of community partner organizations. 102 youth participated in 30 or more sessions.
- 92 percent of 1st-4th grade program participants surveyed improved their connectivity to caring adults.
- 88 percent of 5th-8th grade program participants surveyed improved their basic life skills.
- In partnership with the East Side Arts Council, received a \$37,000 grant from the Saint Paul, Bigelow, and Mardag Foundations to support the KidVenture No School Day and summer camp program.
- Published and distributed over 3,500 copies of the East Side Youth Guide.
- Offered professional development for youth workers and Parks staff through partnerships with the University of Minnesota Youth Studies Department, Saint Paul Youth Services, and the Ramsey County Wakanheza Project.



SAINT PAUL GETTING FIT

The "Active Living" Fitness Membership was launched in May 2008. For only \$25/year, adults (who live or work in the city of Saint Paul) can use recreation center fitness rooms and indoor walking tracks, and keep track of their progress using our web-based "Saint Paul Getting Fit" Fitness Tracker.



REFRIGERATED RINKS

The refrigerated rinks at North Dale and Phalen Recreation Centers continue their success from 2007 by hosting more than 21,000 visitors in 2008. The premium quality ice also was host to Hockey Day Minnesota. The event featured hockey games for all ages including live televised games by area high school hockey teams. More than 3,000 people were in attendance for the very successful event.

SENIOR PROGRAMS

Saint Paul Parks and Recreation offers a variety of activities, programs, and special events for seniors, Retirees, and Adults over the age of 50.

- Senior Programs organized and implemented 23 brunch club meetings, 15 trips and tours, 15 chorus performances, 17 special events, and 30 classes. In addition, the Hiking club met 30 times and the Bowling league bowled on 27 occasions.
- The downtown City Passport senior activity center received 16,598 visitors along with 5482 hours of volunteer support
- Senior Programs had a total of 10,687.5 hours of participation

ADAPTIVE RECREATION

The Adaptive Recreation Program provides a wide variety of activities for people with mental and/or physical disabilities. Activities include league sports, crafts, fitness, swimming, music, and more. The Adaptive Recreation Program also coordinates Inclusion efforts, providing assessments and support when a person with special needs wants to participate in a program offered to the public

- The Program provided more than 40,833 hours of programming for people with disabilities or other special needs.
- The Adaptive Recreation Program hosted two training sessions for Parks and Recreation staff on the topic: Asperger's Syndrome / ADHD: Similarities and Differences in Social Skills.
- Programming for transition-age youth (ages 14 - 22) with disabilities increased in 2008, with the addition of the Fun and Friends "On the Move" Summer Program which featured field trips on selected Fridays throughout the summer

CITYWIDE PROGRAM PARTNERSHIPS

Recreation Services welcomes opportunities to work with other agencies and organizations to share resources, staff and ideas to provide better services to the citizens of Saint Paul.

- Urban Tennis programs attracted more than 2,500 youth and adults.
- The Summer Breakfast and Lunch program, co-sponsored by Saint Paul Public Schools Nutrition Department, provided more than 61,472 meals to youth at the recreation centers during June, July and August.
- Saint Paul Parks and Recreation continued their longstanding partnership with the Saint Paul Public Schools to provide Community Education, Night Moves and Art Moves, Youth Jobs Program, 21st Century Community Learning Center grant, Days Off School programs.
- Initiated new partnership with YMCA to enhance health and fitness opportunities and increase active lifestyles in Saint Paul.
- Other partnerships include the MN Twins, MN Timberwolves, MN Vikings, Sajai Foundation, and University of Minnesota.

MOBILE RECREATION PROGRAM

The mobile recreation program provides activities to youth and families at non-recreation center sites including public housing sites, senior housing sites, passive parks and homeless shelters. The mobile recreation staff also provides program support at the recreation centers and citywide events



- The Roaming Rec Program provided outdoor recreation activities for youth, ages 6-17, at 22 sites throughout the summer. Total attendance was 5,148.
- Mobile Recreation also introduced a portable rock climbing wall, hosting 25 events with participation of 2,896 climbers.

MUNICIPAL ATHLETICS

Grant Programs:

NRPA/NFL/USA Football Grant

- \$50,000 annual administration grant – Pete Globa
- \$10,000 Saint Paul helmet reconditioning program – 290+ helmets reconditioned in Saint Paul
- Four \$2,500.00 NRPA youth football programming grants (North Area, Harding Area, Frogtown, Palace)

Minnesota Twins Community Fund Grant

- \$50,000 annually for programming distributed to our recreation center baseball/softball program including entry fees, equipment, apparel, etc.
- \$10,000 annually for renovation of a Saint Paul baseball or softball field.

STAR Grant

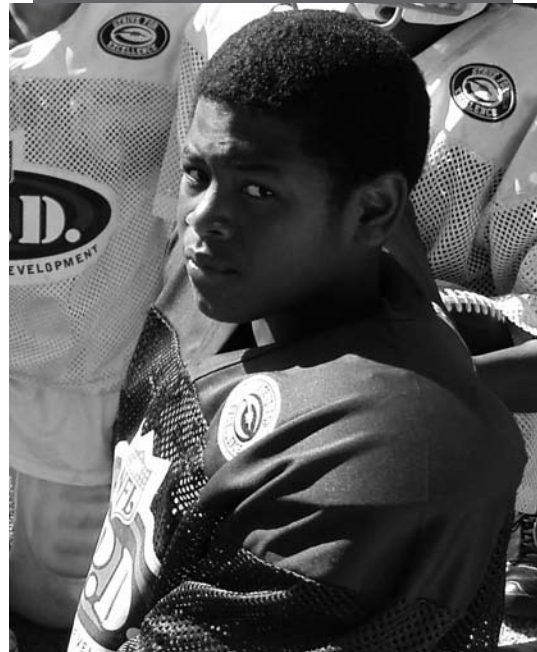
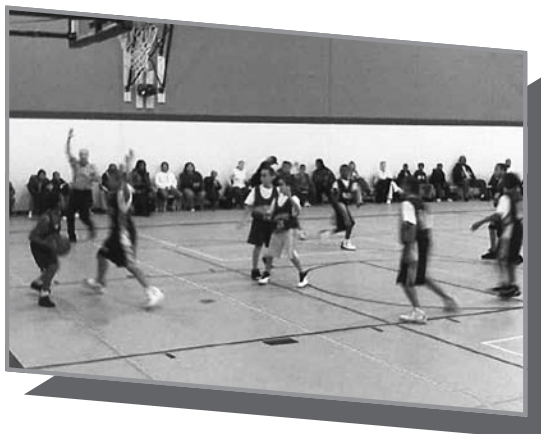
- \$115,000 matching grant awarded to the Friends of Saint Paul Baseball non profit support group to install lights at Dunning Baseball Stadium (Toni Stone Field). The lights were operational on June 1, 2008. "Friends" raised the remaining \$115,000, and SPPR financed the design costs.
- \$30,000 matching grant awarded to Municipal Athletics-Rice/Arlington Batting Cages for complete renovation. The Minnesota Twins Community Fund provided the initial \$30,000. The Batting Cage became operational on Jan. 19, 2009.

Projects:

- In ground irrigation installed at Rice/Arlington Softball ball fields #1, #4, and #5. Combined with the turf management program and permanent lighting Rice/Arlington is the premier softball facility in Saint Paul.

Batting Cages

- * 43,000 visitors – Partial year due to renovation



Enhanced Rental Opportunities

McMurray

Soccer, Lacrosse, Football, Rugby, Gaelic Football, Ultimate Frisbee, Hurling, Baseball, Softball, Kickball

Arlington/Arkwright

Baseball, Soccer

Rice/Arlington

Softball, Baseball, Soccer, Field Hockey, Kickball

Dunning

Baseball, Softball

Officiating Program

- Municipal Athletics provides the administration for employment, training, assigning and evaluation of 300 sports officials in our youth and adult athletic program.

Support Group

Friends of Saint Paul Baseball is the non profit support group that generates private dollars to help support, maintain, and improve our athletic field infrastructure related to baseball and softball. Friends generated \$565,000 in 2008 – including:

- Dunning Baseball Stadium Field Light Project – \$230,000
 - Generated Revenue \$115,000
 - STAR Grant \$115,000
- Midway Stadium STAR Grant – \$300,000
- Joe Mauer Golf Tournament – \$35,000



Partnerships

- MLB/Minnesota Twins
- NFL/Minnesota Vikings
- JR. NBA/Jr. WNBA
- ASA Softball – American Softball Association
- MBA Baseball – Minnesota Baseball Association
- MYAS – Minnesota Youth Athletic Services
- MSF – Minnesota Sports Federation
- American Legion Baseball
- VFW Baseball
- Multiple Community Business Partnerships
- Tri County Softball
- Concordia – Saint Paul University
- St. Thomas University
- USA Broomball

2008 Events

- Major League Baseball RBI Regional
- Minnesota Class A State Amateur Baseball Tournament
- 35+ State Baseball Tournament
- Rice St. Softball Tournament
- Paul Molitor Classic Youth Baseball Tournament
- MSF Winter Carnival Broomball Tournament
- Harding Area Youth Softball Tournament
- ASA Softball 16U, 18U National Qualifying Tournaments
- Multiple Youth and Adult Playoffs/Tournaments
- Youth Football “Vikings of Tomorrow Game” at the Metrodome



Programming:

Youth

- **RBI Baseball and Softball Program**
 - More than 1,600 participants
 - 8U, 10U, 12U, 14U, 15U, 18U age groups – recreational
 - 12U, 13U, 14U Baseball Triple Play Leagues
- **Basketball**
 - More than 1,600 participants
 - 10U, 12U, 14U, 18U age groups – recreational
- **Volleyball**
 - More than 690 participants
 - 10U, 12U, 14U, 18U age groups – recreational
- **Football**
 - 1,050 participants – Tackle – recreational
 - 300 participants – Flag – recreational
 - 10U, 12U, 14U age groups – recreational
- **Fall Soccer**
 - 780 participants – recreational
 - 10U, 12U, 14U age groups
- **Indoor Soccer**
 - 200 participants
 - 10U, 12U age groups

Total participants – 6,220

Adult

- **Broomball/Boot Hockey**
 - 1,800 participants
- **Touch Football**
 - 280 participants
- **Softball**
 - 7,500 participants
- **Basketball**
 - 400 participants
- **Baseball**
 - 550 participants

Total participants – 10,530

Events of 2008

Republican National Convention
Oxford Community Center Grand Opening
Taste of Minnesota
Wishes for the Sky
Winter Carnival
Hockey Day Minnesota
Holiday Lights in the Park
Hmong Freedom Celebration
Raspberry Island Grand Opening
Upper Landing Grand Opening
East Side Circulators Launch
Twin Cities Marathon
ZooBoo
Spring Flower Show
Cinco De Mayo
Highland Fest

Rondo Days
Spring Parks Cleanup

Comcast Movies in the Park


TWIN CITIES TOYOTA DEALERS
SAINT PAUL PARKS & RECREATION
Music in the Parks
presented by Toyota
Heart Walk
Irish Fair
Grand Ole Day
Blooming Butterflies Exhibit
Corpse Flower Bloom
Star of the North Games
Downtown Beat
Classic Car Show
Great River Energy Bicycle Festival



Things to look for in 2009...

- Como Circulator Launch
- Arbor Month Tree Plantings
- Recreation Center Fee Assistance Program
- Start! Walking Path Stickers
- Como Pool Replacement Design Process
- Harriet Island Renovations Phase II Completion
- New Golf Saint Paul Website

SAINT PAUL - THE MOST LIVABLE CITY IN AMERICA

Mayor Chris Coleman

Our Vision for the Future

As we stake out goals and priorities for our City's future, we start with an inherent appreciation of and love for our home. We will also have the foresight and courage to reach for new heights as we hold on to that unique sense of place. We will be guided by our core values of **cooperation, responsibility and respect**. We will be determined that no child born into disadvantage and prejudice be bound to stay there. By **mending disparities, by opening doors**, we will make sure that even our most vulnerable residents dare to hope and dream.

Our City will be a national leader for quality education, safe streets, thriving local commerce, healthy living, state-of-the-art infrastructure and eclectic character. These are the goals of Mayor Chris Coleman's administration. These are assets that will make **Saint Paul the Most Livable City in America**.



CITY OF SAINT PAUL NON-DISCRIMINATORY POLICY

The City of Saint Paul will not discriminate against or harass any employee or applicant for employment because of race, creed, religion, sex, sexual or affectional orientation, color, national origin, ancestry, familial status, age, disability or marital status with regard to public assistance.



Oxford Community Center



The new Oxford Community Center, which hosted a grand re-opening on May 31, 2008, is like no other Saint Paul Parks and Recreation facility. This comprehensive community center combines water park features with superior recreational options. The Oxford Community Center boasts the Jimmy Lee Recreation Center and Great River Water Park, along with partnerships with the Summit University Teen Center and Saint Paul Public Schools. By combining all four aspects within the Oxford Community Center, visitors experience multiple amenities and activities without having to leave the facility.



Jimmy Lee Recreation Center

The indoor recreation facility features:

- Four Gymnasiums
- Walking Track
- Fitness/Weight Room
- Dance Studio
- Computer Learning Center
- Multi-Purpose Room
- Craft Room
- Concession Stand
- Teaching Kitchen

Great River Water Park

The indoor aquatics water park features:

- Two Water Slides
- Children's Splash & Activity Area
- Waterfall
- Party Room
- Family & Male/Female Locker Rooms
- Lap/Leisure Pool
- Sauna

Outdoor Facility

The outdoor facility features:

- Baseball & Softball Fields
- Synthetic Turf Field*
- Children's Play Area
- Expanded parking Lot with Lighting Improvements
- Landscaping & Gardening Improvements

